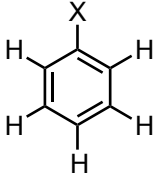
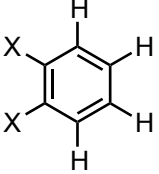
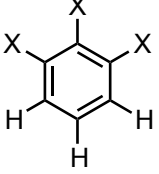
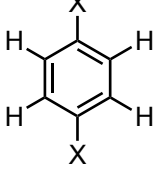
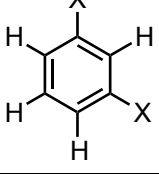
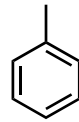
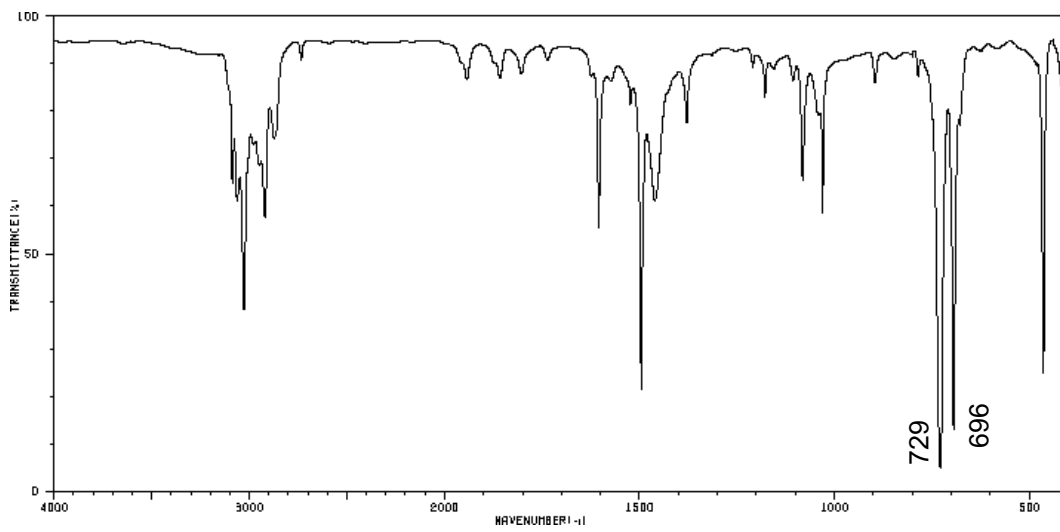


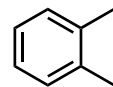
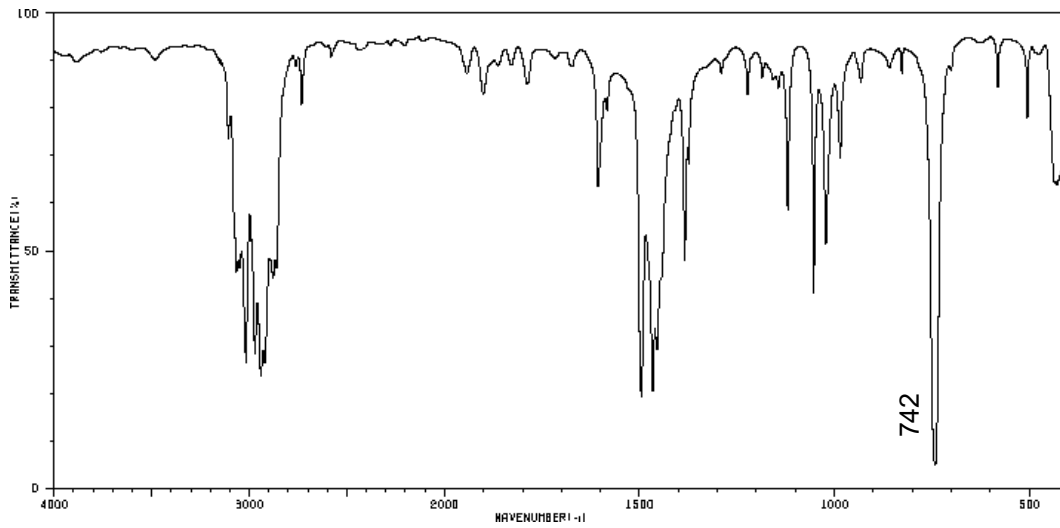
**Absorptionsfrequenzen der C-H Deformationsschwingungen (*out of plane*)
von Aromaten in Abhängigkeit des Substitutionsmusters**

| | Wellenzahl der C-H Deformationsschwingung in cm ⁻¹ | |
|---|---|---|
|  | 770 - 735 (s) 710 - 685 (s) | gewöhnlich zwei Banden |
|  | 760 - 740 (s) | |
|  | 800 - 770 (s) | |
|  | 840 - 800 (s) | |
|  | 900 - 800 (w) | Bande des isolierten H gewöhnlich sehr schwach |

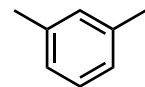
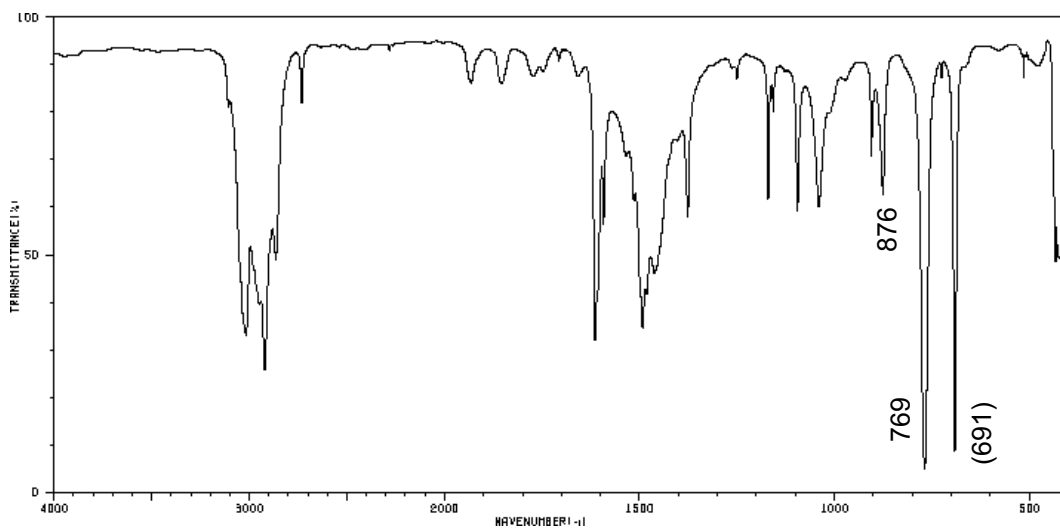
Toluol



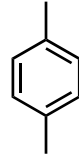
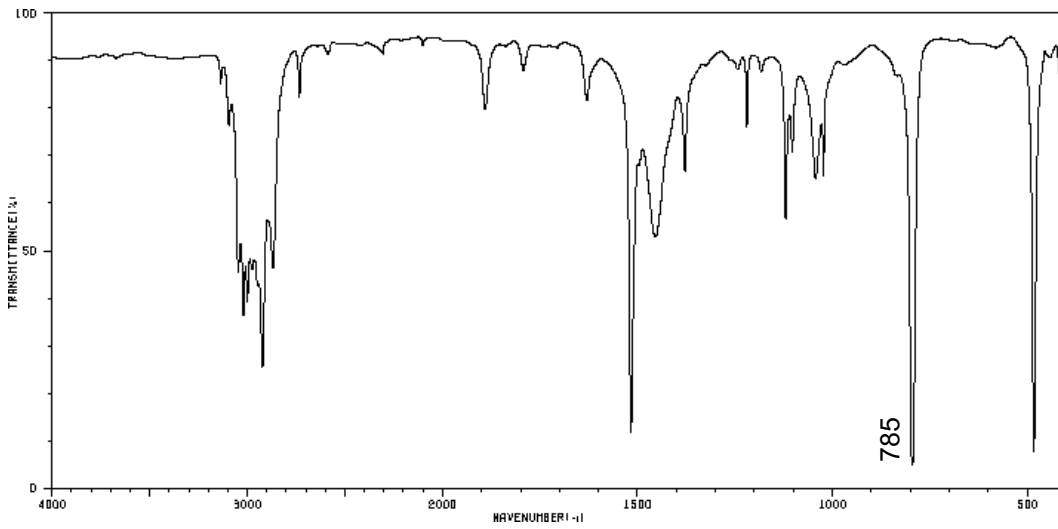
1,2-Dimethylbenzol (o-Xylol)



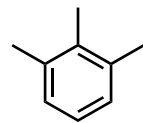
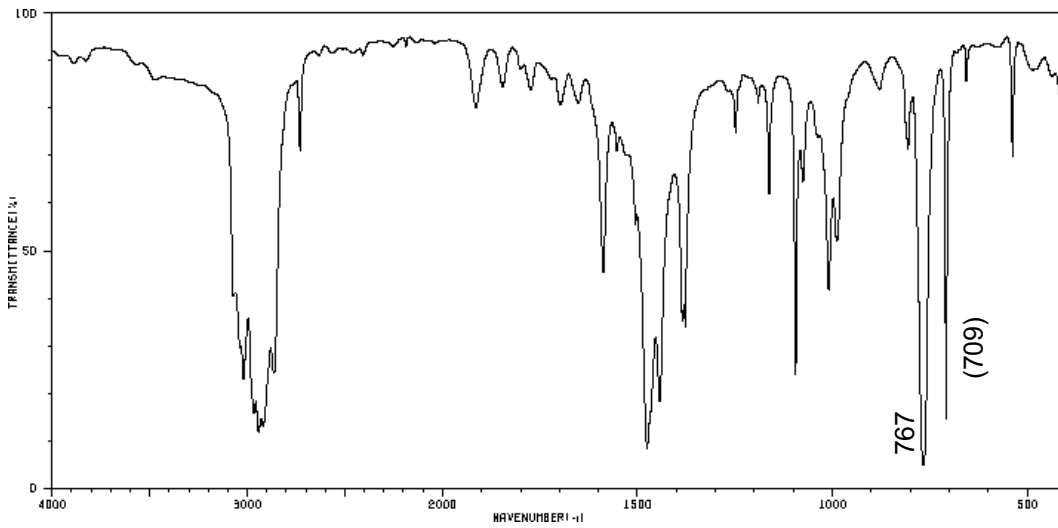
1,3-Dimethylbenzol (m-Xylol)



1,4-Dimethylbenzol (p-Xylol)



1,2,3-Trimethylbenzol



1,2,4-Trimethylbenzol

