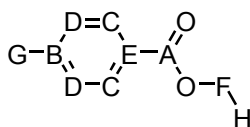
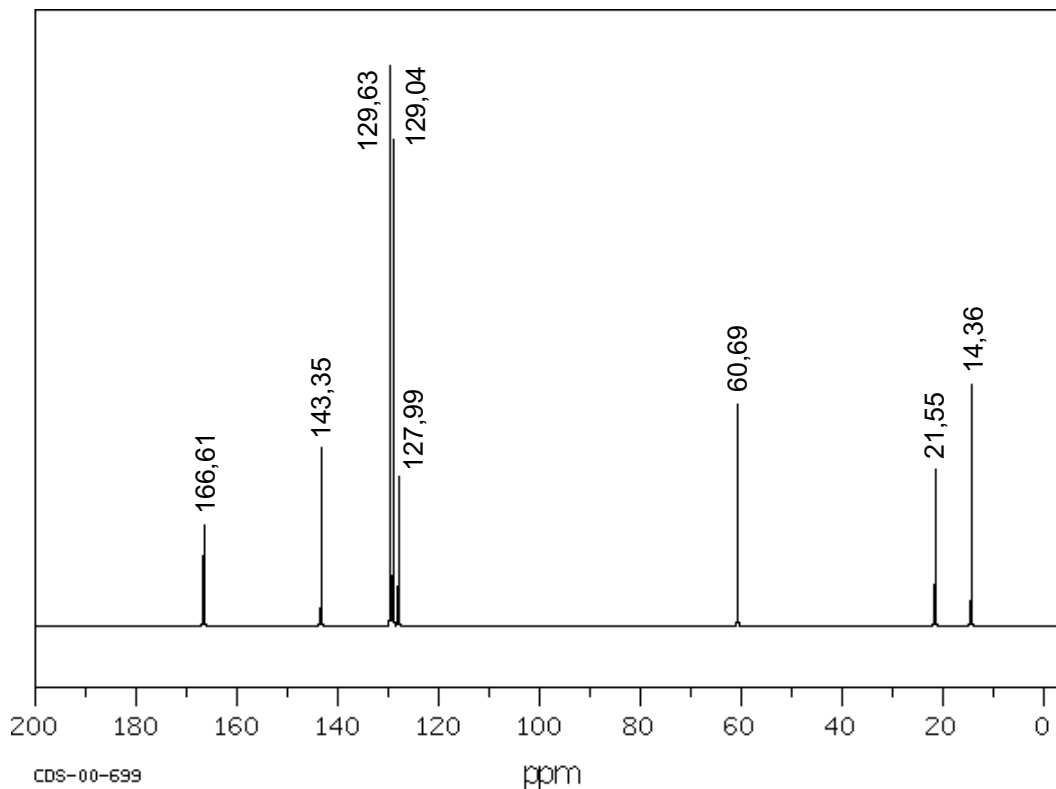
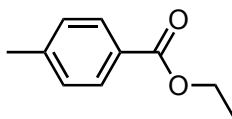


**Spektrum von 4-Methylbenzoesäureethylester**

 (CDCl<sub>3</sub>, 25 MHz)


ppm	Int.	Zuordn.
166,61	179	A
143,35	318	B
129,63	100	C
129,04	866	D
127,99	264	E
60,69	393	F
21,55	279	G
14,36	428	H

 Anwendung des **Inkrement-Systems** zur Zuordnung der aromatischen C-Atome:

$$\begin{array}{lll}
 \text{C(B): } 128,5 + S_1(\text{CH}_3) + S_p(\text{COOEt}) & = 128,5 + 9,2 + 4,3 & = 142,0 \\
 \text{C(C): } 128,5 + S_o(\text{COOEt}) + S_m(\text{CH}_3) & = 128,5 + 1,2 - 0,1 & = 129,6 \\
 \text{C(D): } 128,5 + S_m(\text{COOEt}) + S_o(\text{CH}_3) & = 128,5 - 0,1 + 0,7 & = 129,1 \\
 \text{C(E): } 128,5 + S_1(\text{COOEt}) + S_p(\text{CH}_3) & = 128,5 + 2,0 - 3,1 & = 127,4
 \end{array}$$